

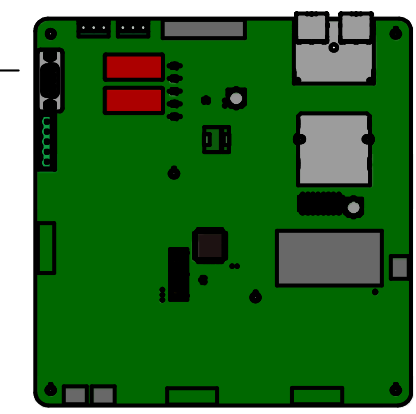
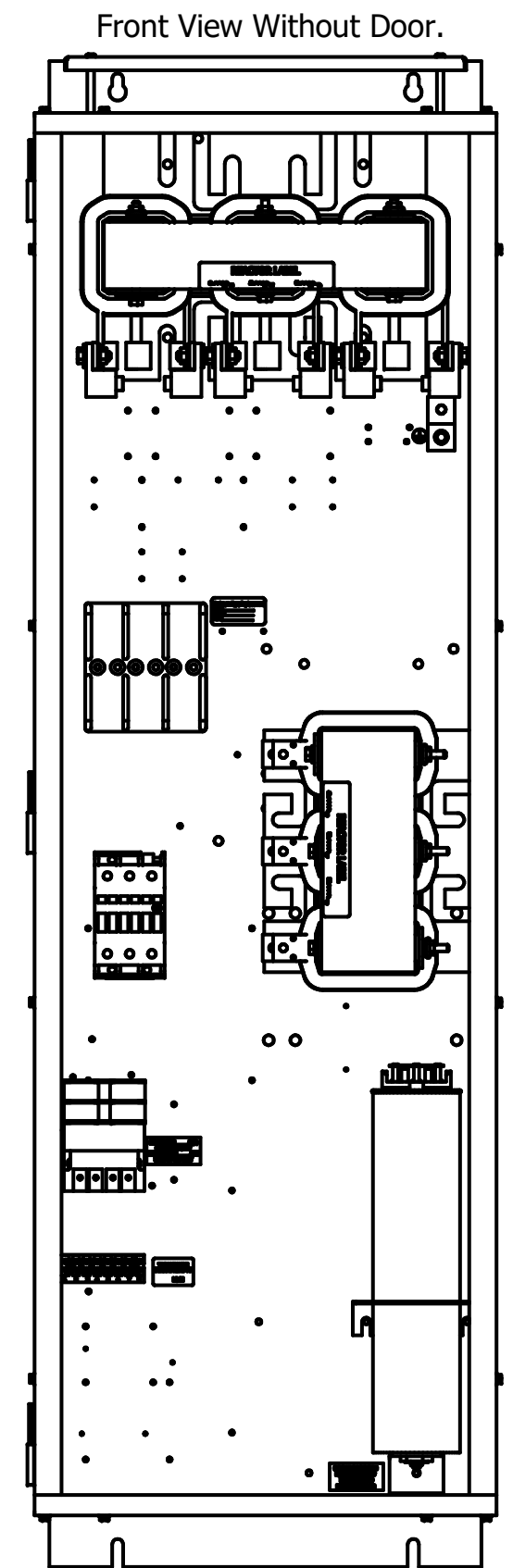
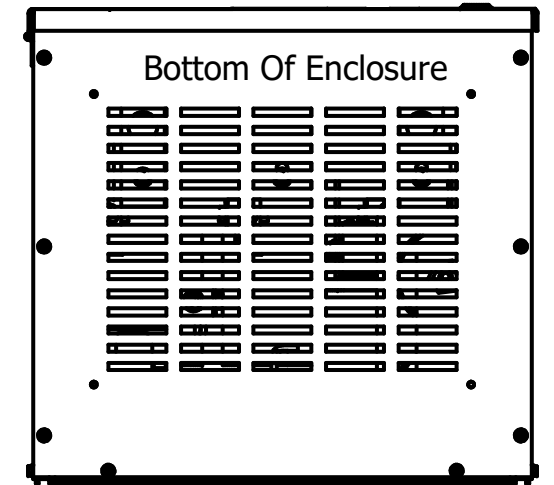
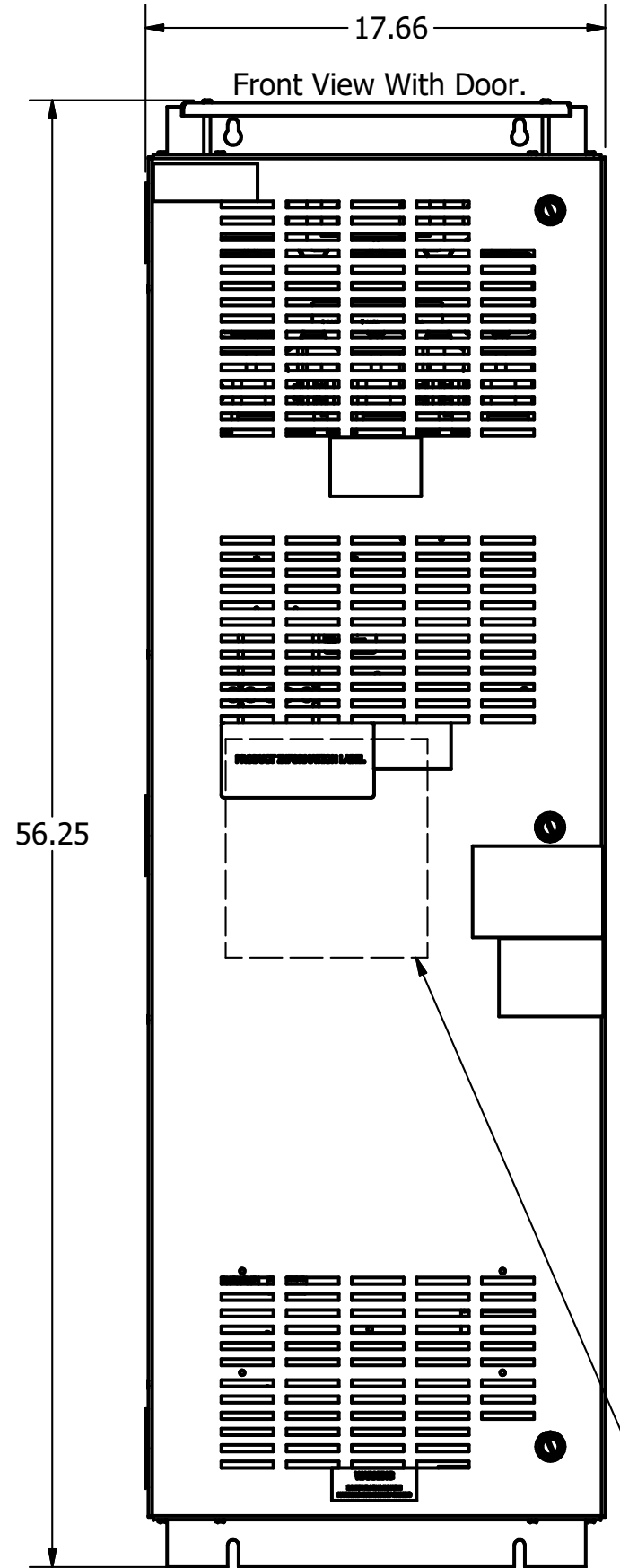
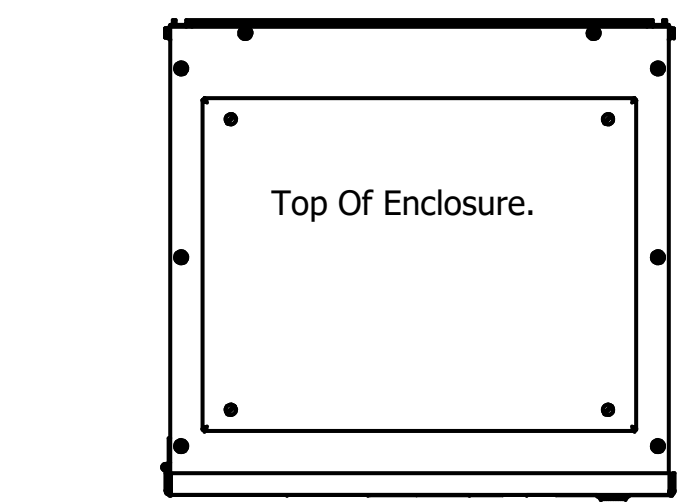
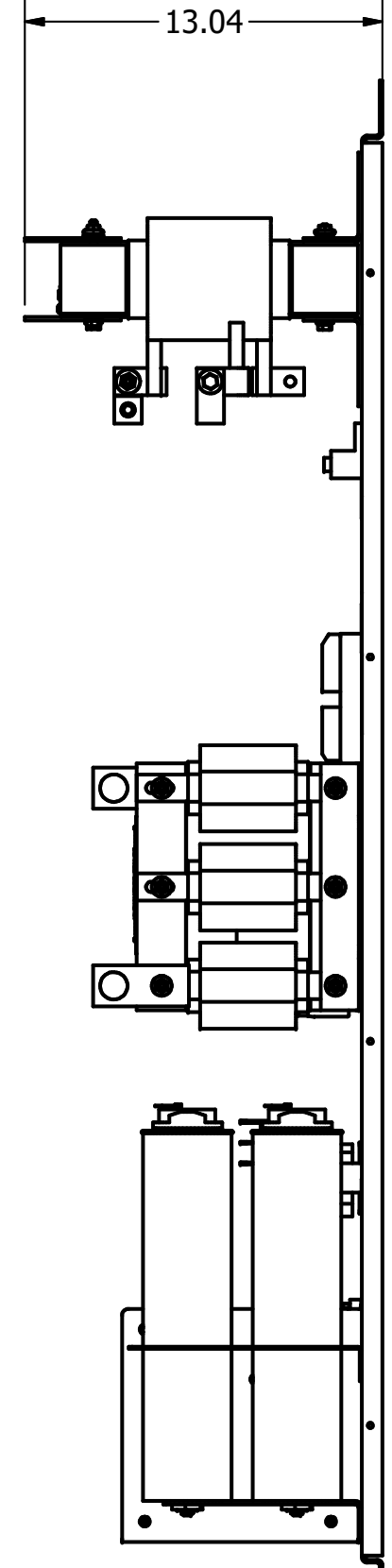
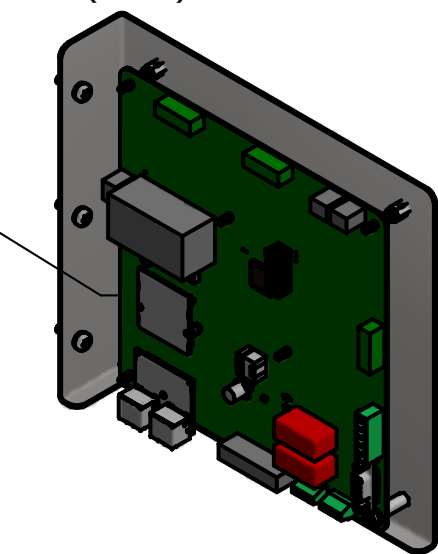
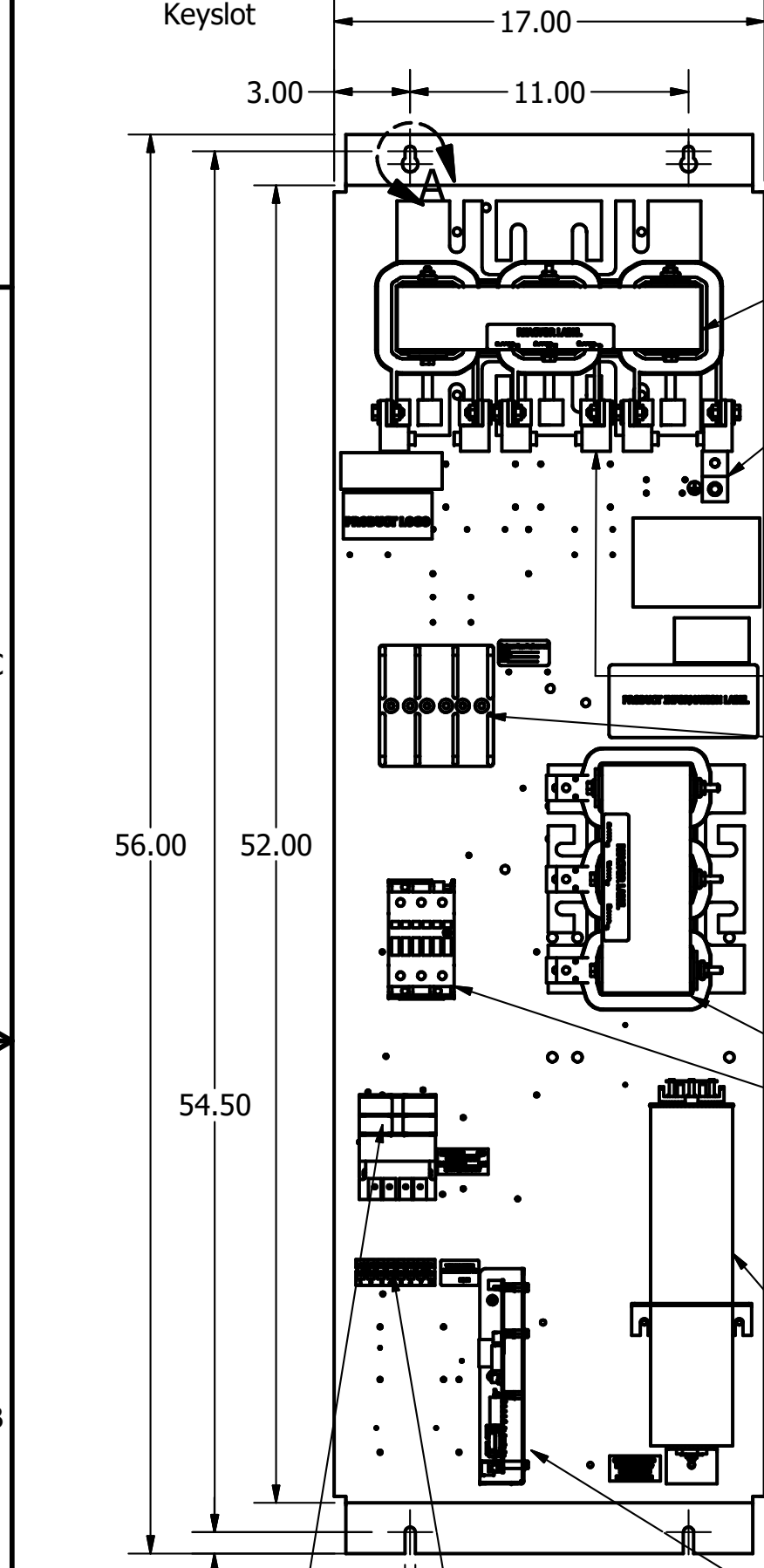
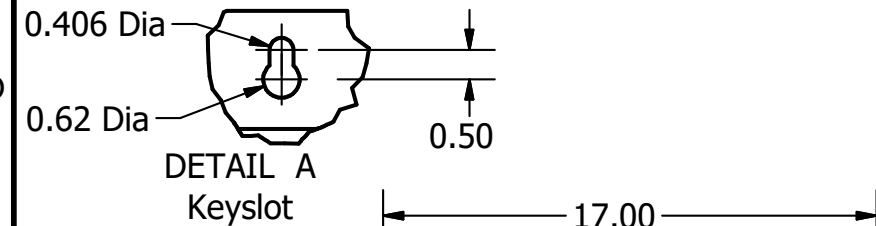
HGP Open Part Number	Schematic Drawing #	Approx Weight (LBS)
HGP0125CW0S0000	29474	220
HGP0125CW0C0000	29474-1	227
HGP0125CW0S1000	29474-PQ1	222
HGP0125CW0C1000	29474-PQ	229

HGP Part Number	HorsePower (HP)	kVar	Harmonic	Voltage (V)	Hz.	Phase
HGP0125CW----	125	40	5th	600	60	3

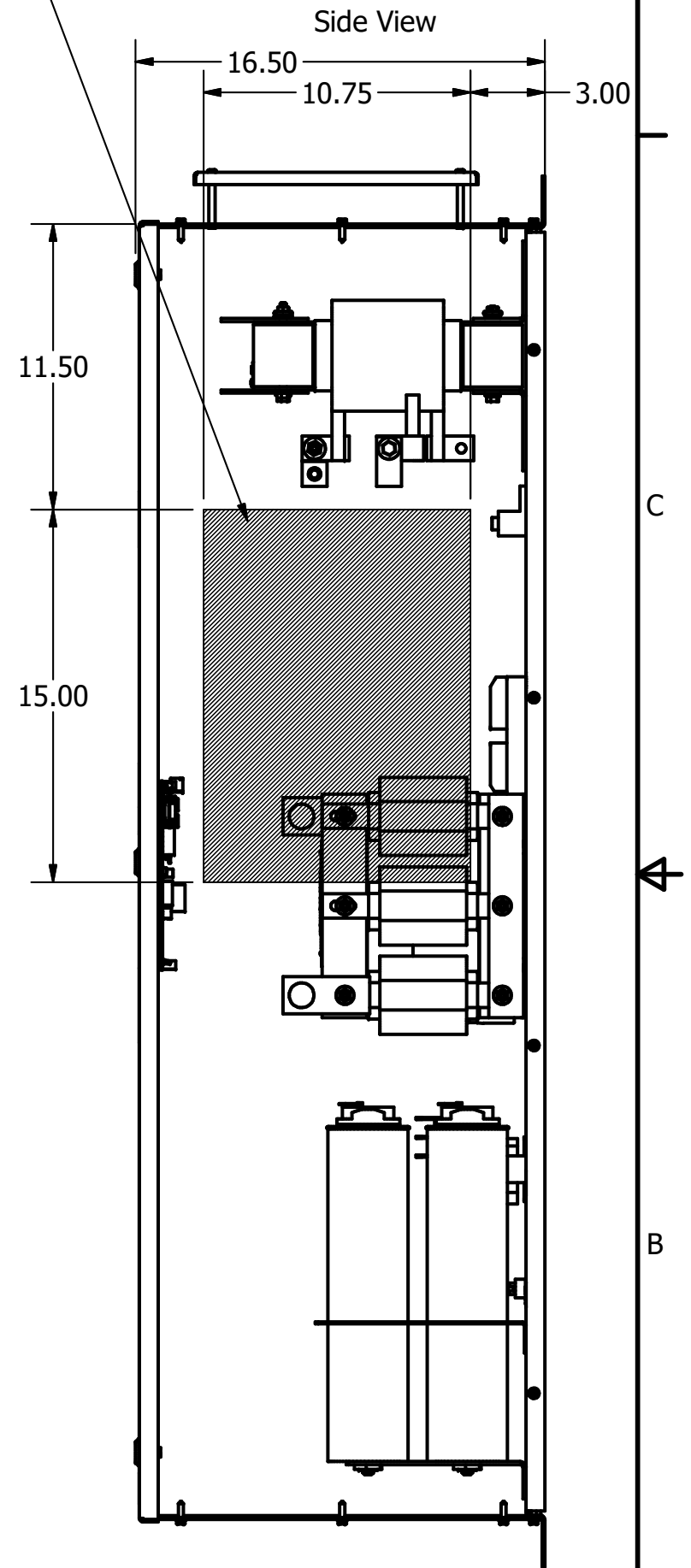
HGP Eclosed Type 1 Part Number	Schematic Drawing #	Approx Weight (LBS)
HGP0125CW1S0000	29474	315
HGP0125CW1C0000	29474-1	322
HGP0125CW1S1000	29474-PQ1	317
HGP0125CW1C1000	29474-PQ	324

Note: For Torque Information See IOM Manual.  
Customer Connections. L1, L2, L3, T1, T2, T3  
Wire Range: 250MCM to 6AWG.

Ground Lug Wire Range: 250MCM to 6AWG.



Suggested Area, For Customer Wire Entry And Exit Location.



Note: Customer is responsible for proper cooling of filter components on open panels. Capacitors Maximum Ambient 50°C

Components	HGP0125CW----			
	0S0000/1S0000	0C0000/1C0000	0S1000/1S1000	0C1000/1C1000
Line Reactor (LR)	X	X	X	X
Trap Reactor (TR)	X	X	X	X
Capacitor (Cap)	X	X	X	X
Trap Fusing, FU1, FU2, FU3	X	X	X	X
Contactor (CNT)		X		X
Transformer (XFMR)	X	X	X	X
XFMR Fusing, FU4, FU5	X	X	X	X
PQConnect Board			X	X

TCI, LLC CLAIMS PROPRIETARY RIGHTS IN THE MATERIAL HEREIN DISCLOSED. IT IS SUPPLIED WITHOUT PREJUDICE TO ANY PATENT RIGHTS OF TCI AND MAY NOT BE REPRODUCED OR USED TO MANUFACTURE ANYTHING SHOWN THEREIN WITHOUT WRITTEN PERMISSION FROM TCI.

Customer Is Responsible For Installation to Meet All National And Local Electrical Codes.

Material(s) Shall be RoHS Compliant

<p>TCI, LLC CLAIMS PROPRIETARY RIGHTS IN THE MATERIAL HEREIN DISCLOSED. IT IS SUPPLIED WITHOUT PREJUDICE TO ANY PATENT RIGHTS OF TCI AND MAY NOT BE REPRODUCED OR USED TO MANUFACTURE ANYTHING SHOWN THEREIN WITHOUT WRITTEN PERMISSION FROM TCI.</p>		<p>TOLERANCES (EXCEPT AS NOTED) DECIMAL .XX ± .25 .XXX ± .10 FRACTIONAL ± 1/16 ANGULAR ± 1°</p>	<p>W132 N10611 Grant Drive Germantown, WI 53022</p> <p>HarmonicGuard Passive HGP, 125HP, 600/3/60, Open and Type 1</p>
<p>DRN BY: DSW SCALE: 1/6</p>	<p>DATE: 8/24/18 DATE: 2/3/15</p>	<p>BY: DSW</p>	<p>105707DG SHT 1 OF 1</p>